

# ROVAL® MC Color Matching Metallic Spray for Galvanized Materials

## Weathers Same as Galvanized Materials

Theoretical coverage ..... 32.3ft<sup>2</sup> (3m<sup>2</sup>)

Dry to Touch Time ..... 15-30 minutes

Recommended Film Thickness ..... 0.4mil (10µm)



**Spray MC after applying ROVAL R on cut profiles, welds, and non-plated areas for maximum protection.**



**No anti-corrosion effect.**

- Weathering is slowed by excessively thick film.
- Exposure conditions will affect the weathering rate.

Color Sample



Before application

After application

MC applied at the lower left

After 6 months exposure

### Perfect match to color of galvanization

MC has a metallic sheen color.

### Similar weathering to galvanization

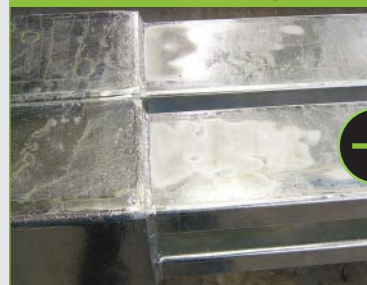
Suitable for gray coating touch-up.

### Good match with ROVAL R

Ideal topcoat for ROVAL High Build Spray.

## Application Examples

### Gray Coating Touch-Up



Before

After

### Topcoat for ROVAL R



ROVALize with ROVAL R

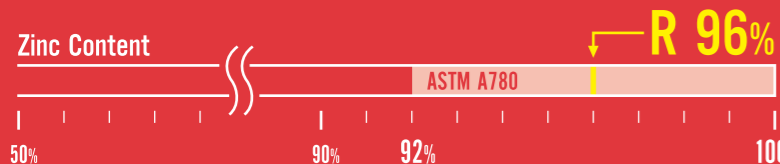
Apply MC for color matching



# ROVAL® R Cold Galvanizing Spray High-Build Type

Comforms to MIL-P-26915, MIL-P-21035 and ASTM A780

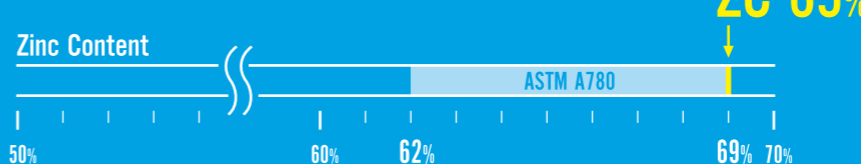
Theoretical coverage ..... 5.4ft<sup>2</sup> (0.5m<sup>2</sup>)  
 Dry to Touch Time ..... 10-20 minutes  
 Recommended Film Thickness ..... 3.2mil (80µm)



# ROVAL® ZC Galvanizing Repair Metallic Spray

Meets ASTM A780 | Weathers Same as Galvanized Materials

Theoretical coverage ..... 10.8ft<sup>2</sup> (1m<sup>2</sup>)  
 Dry to Touch Time ..... 20-40 minutes  
 Recommended Film Thickness ..... 2 layers of 0.8mil (20µm)



Suitable for minor touch-ups, complex shapes, or covering hard-to-reach areas.

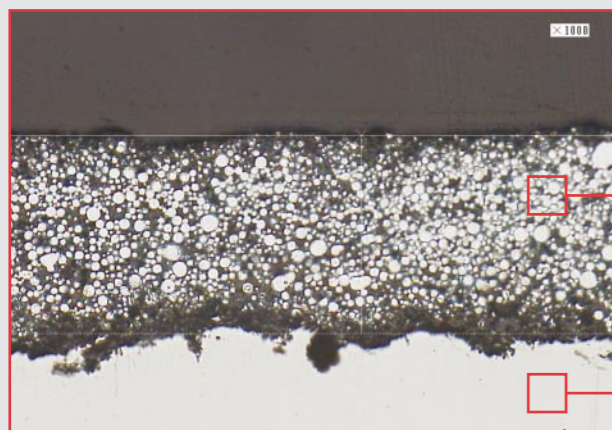


**Wind Guard!**  
 ROVAL R spray eliminates over-spraying on windy days, compared to other sprays.



**More Efficient**  
 High Build feature saves you time! No need for additional coats!

Cross-sectional view of ROVALized surface



### High 96% zinc content

Dried film contains 96% pure zinc.

### Protection as-good-as hot-dip galvanizing

Long-lasting galvanic film protection.

### Easy application

Just one spray results in a 3.2mil film.

### Powerful jet nozzle

Specially designed nozzle for use on windy days.



### Power Up!

Reinforce anti-corrosion performance as a topcoat to ROVAL R.



### Effective anti-corrosion protection

Contains 69% zinc as well as aluminum compounds.

### Similar color to galvanized steel

ZC results in a silver sheen color.

### Similar weathering to galvanization

Suitable touch-up for galvanized steel.

Apply directly on steel or galvanized surfaces.



### Do not use primer.

Primer disrupts the electrochemical reaction of ROVAL.

### Step 1

#### Surface preparation



- Expose bare metal by sandblasting or other power tools.
- Remove all remnants of old paint, moisture, oil, mill scale, rust, and any other contaminants.

### Step 2

#### Shake can vigorously (until agitator balls rattle inside.)



### Step 3

#### Maintain film thickness



- Spray evenly with the recommended film thickness.



### Wrong Application



Do not directly apply on rusted or painted surfaces!